

Welcome to Yale Repertory Theatre

Front Entrance



The **theater** is located at 1120 Chapel Street, New Haven.

The **Front Entrance** is NOT accessible.

If you are unable to use stairs, please see elevator instructions on page 4.



There are **6 up steps** leading to the front doors.

Two large red doors lead into the building. There is one (1) step up to the doorway.

The red doors lead to another set of stairs to the main lobby. **There are 10 steps up.**

Main Lobby

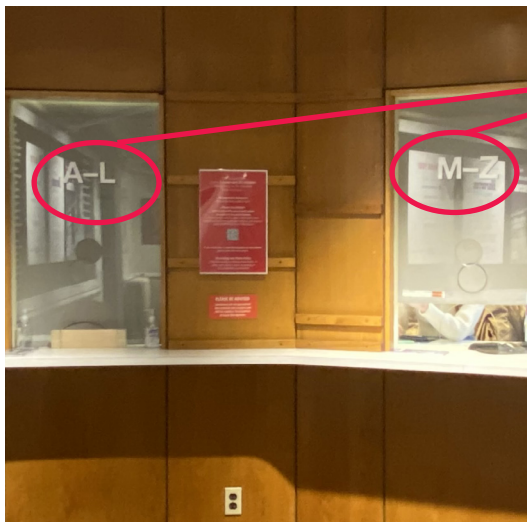


The **main lobby** has red carpet and may have dim lighting.

The **main lobby** may be crowded in the 20 minutes before the show starts. There also may be a line for the box office. Arriving early can help you avoid a crowd.



The **Box Office** is to the right when you come up the stairs.



If you need to pick up your ticket, you can get your ticket at the **Box Office**. Go to the window with the first letter of your last name.

Main Lobby



The **Concierge** and a water fountain are to the left.

The Concierge has:

- large print programs
- Braille programs
- assistive listening devices
- audio description receivers
- sensory aids

The **Concierge** can also answer any questions you may have.



Before the show starts, you can wait in the **Main Lobby**, go downstairs to the **August Wilson Lounge**, or enter **the auditorium**.

The **Restrooms** are downstairs. Locate the restroom signs in the lobby to go downstairs.

Elevator Entrance



The **elevator entrance** is on the left side of the building, down a brick pathway.

The **elevator entrance door** is next to the Harvest restaurant. It is unlocked one hour before the performance. There is an automatic door button on the right of the door.

The elevator goes up to the **auditorium** and down to the **August Wilson Lounge**.

The **August Wilson Lounge** has an accessible, single-stall restroom.

An usher will be stationed inside the entrance to greet you and answer any questions.

Another usher **will** meet you at the auditorium level. They can give you your tickets, answer any questions, and provide **concierge** services:

- large print programs
- Braille programs
- assistive listening devices
- audio description receivers
- sensory aids

August Wilson Lounge



The **August Wilson Lounge** has small tables, **concessions**, and access to **restrooms**.

People go to the August Wilson Lounge to hang out before the show and during intermission. You can also go there during the show if you need a break.



At this counter, you can purchase drinks and snacks.



This table has **free coffee, tea, and water**.

You can bring your drinks into the auditorium if your cup has a lid.

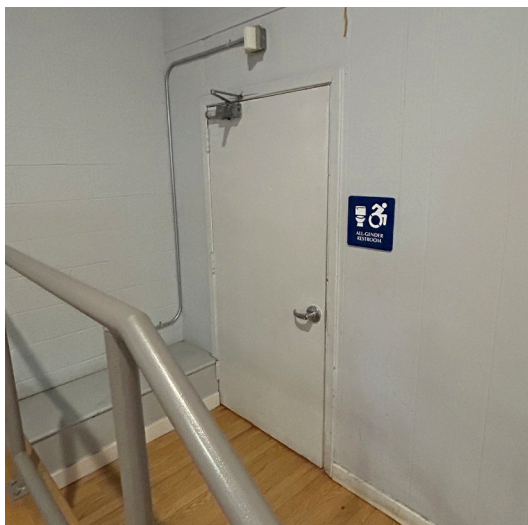
Restrooms



A **multi-stall women's restroom** is at the base of one stairwell, before entering the August Wilson Lounge.



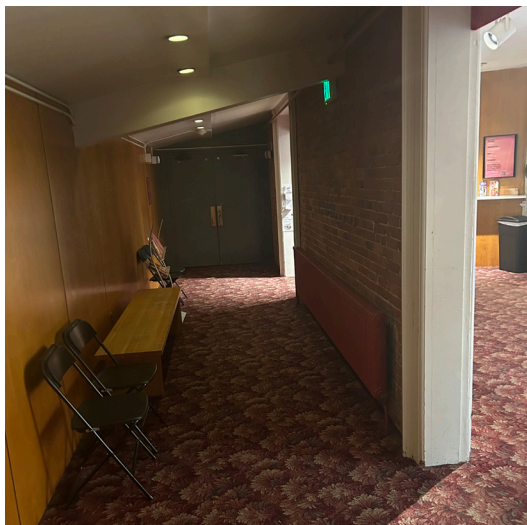
A **multi-stall men's restroom** is at the other stairwell, 8 steps down from the August Wilson Lounge.



A **single-stall all-gender accessible restroom** is in the August Wilson Lounge.

To dry your hands, all restrooms have paper towel dispensers.

Auditorium



The **auditorium** had two entrances; one on the right and one on the left.

Signs in the lobby tell you which side to enter, depending on your seat number.

Your seat number is on your ticket.

At each end of the hallway, an usher scans your ticket.

Once you're inside the auditorium, another usher will give you a program.

The lighting in the auditorium is dim. There may be music or sound playing. The aisles are carpeted. There are steps in the aisle to go up or down to your seat.

Your **seat** has a letter and a number. Both the number and letter are on your ticket. The letter tells you what row your seat is in. The number tells you which seat in that row is yours.

To find your seat:

Row letters are on the seat's arms.
Seat numbers are the seat itself.

An usher can help you find your seat if you tell them the letter and number.