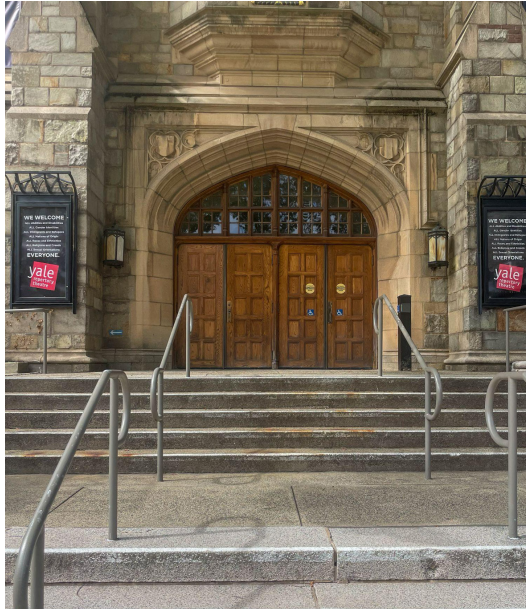


University Theatre Building Map

Front Entrance



The **theater** is located at 222 York Street, New Haven, CT 06511.

The **Front Entrance** is accessible by steps and a **ramp** (located to the left of the staircase).



Two sets of brown doors lead into the building. The far right door has an **accessible push button** for entry.

Main Lobby



Main Lobby

The **main lobby** has red carpet and may have dim lighting.

The **main lobby** may be crowded in the 20 minutes before the show starts. There also may be a line for the box office. Arriving early can help you avoid a crowd.



Main Lobby



The **box office is to the left** after you enter the building.

If you need to **pick up your ticket**, you can get your ticket from the box office.



The **Concierge desk** and a **water fountain** are to your right.

The **Concierge** has:

- Large print programs
- Braille programs
- Assistive listening devices
- Audio description receivers
- Sensory aids

The concierge can also answer any questions you have.

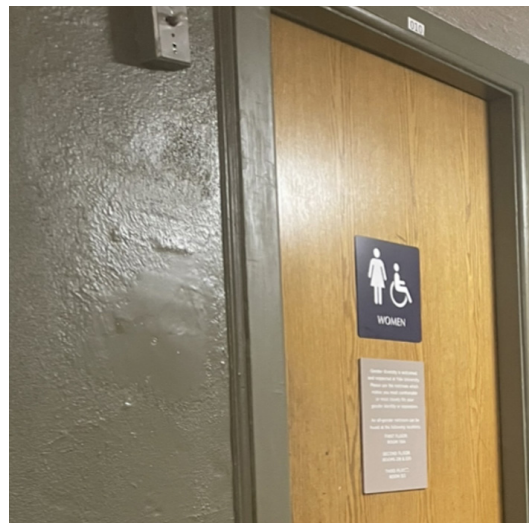
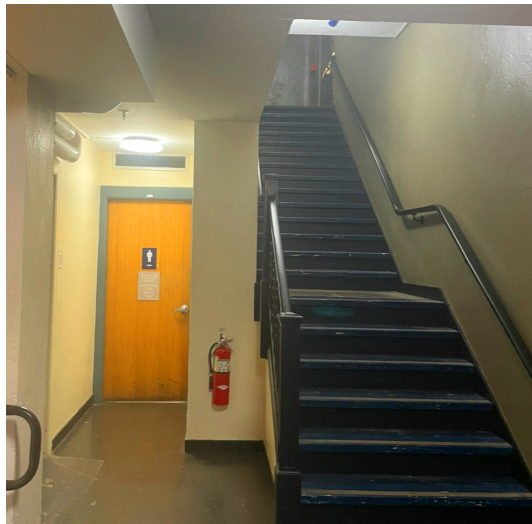
Restrooms



Before the show starts, you can wait in the **main lobby**, go **downstairs to the lounge**, or enter the **auditorium**.

There is an **accessible restroom** near the water fountain in the main lobby. There are more **restrooms** located downstairs. There is a staircase located to the left of the box office with signs for restrooms.

There is a men's restroom and women's restroom located at the bottom of the staircase. Both restrooms have several stalls, sinks and paper towel dispensers.



The Lounge



The **lounge** has small tables, concessions, and access to restrooms.

People go to the **lounge** to hang out before the show and during intermission. You can also go there during the show **if you need a break.**

At the counter, you can purchase **drinks and snacks.**

A table has free coffee, tea, and water.

You can bring your drinks into the auditorium if your cup has a lid.



Auditorium



If your seat is in the **orchestra** you will enter from the main lobby. The doors to the orchestra are in front of the doors to the main entrance.

At the entrance to orchestra seating, an usher scans your ticket and another usher will give you a program.

If your seat is in the **balcony** use one of the staircases on either side of the main lobby. Another usher upstairs will be waiting to help you find your seat. The balcony slopes down.



Auditorium



The lighting in the auditorium is dim.
There may be music or sound playing.
The aisles are carpeted and the floor slants down.

Your seat has a letter and number.
Both the number and letter are on your ticket.
The letter tells you what row your seat is in.
The number tells you which seat in that row is yours.
Some seats have a step up to reach them.

To find your seat.

Row letters are on the seat's arms.
Seat numbers are on the seat itself.

An usher can help you find your seat if you tell them the letter and number.

Note: Emergency exits are located on either side of the theater.

